

JOIN US IN KONA, HAWAII JANUARY 21 - 28, 2026

## FAQs About The Workshop

**We highly recommend that you purchase travel insurance to cover the cost of your trip and workshop.**

### *What should I bring?*

You will need to bring your own brushes, pencils, paper, palette, paints, portable easel and stool. For the complete list, visit [EricWiegardt.com](http://EricWiegardt.com) under "Workshops."

### *Will there be a lot of walking?*

We will be doing some walking. You will be carrying your own equipment. Please pack only what you can carry.

### *How far is the Hotel from the Airport?*

The Courtyard King Kamehameha's Kona Beach Hotel is approximately 8.5 miles from the Kona International Airport (KOA). The drive typically takes around 15-20 minutes, depending on traffic conditions. Reserve a taxi through the hotel or pick one up at the airport.

### *What meals are included in the trip fee?*

Welcome Reception and a daily breakfast are included as well as two group dinners.

### **Registration Information:**

To register, sign up online at [EricWiegardt.com](http://EricWiegardt.com), call the gallery at 360-665-5976, or mail your completed registration forms with deposit to Wiegardt Studio Gallery, PO Box 1114, Ocean Park, WA 98640.

A \$500 deposit (\$50 non-refundable) with the Registration and Responsibility Clause form guarantees your spot. Deposits must be received by August 1, 2025. Each person attending is required to fill out both documents, sign and return them with their deposit. Full payment of balance is due by October 1, 2025. Please pay your balance by check; credit card payments will require an additional 4% to cover the processing fee.

### **Cancellation/Refund Policy:**

*For cancellations prior to August 1, 2025, all money will be refunded minus the \$50 non-refundable fee.*

*For cancellations between August 1, 2025 to October 1, 2025, all money will be refunded minus the \$500 administration fee. \*The administration fee is non-refundable and non-transferable\**

*After October 1, 2025, cancellations must be in writing; no money will be returned to the applicant unless that individual's space can be resold. If the space is resold, all monies will be refunded minus the \$500 administration fee.*

*No refund will be given to an applicant who does not participate or complete the workshop or field activities.*

**Eric Wiegardt reserves the right to cancel for any reason.**

Scan the QR Code to register today at [ericwiegardt.com](http://ericwiegardt.com)!



**ERIC WIEGARDT**  
AWS-DF, NWS

ERICWIEGARDT.COM | 360.665.5976

VISUAL PLEASURE FOR GENERATIONS

**ERIC WIEGARDT**  
AWS-DF, NWS



KONA  
HAWAII

WATERCOLOR PLEIN AIR WORKSHOP

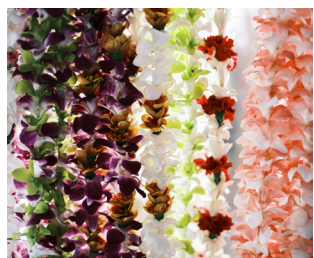
JANUARY 21 - 28, 2026

ERICWIEGARDT.COM | 360.665.5976



## KONA, HAWAII WATERCOLOR PLEIN AIR WORKSHOP

Kona, Hawaii's sunlit jewel, blends ancient Hawaiian heritage with breathtaking natural beauty. The Big Island's western shore presents artists with an extraordinary palette—from dramatic volcanic landscapes to lush tropical gardens, golden sunsets reflecting on azure waters, and historic sites telling tales of Hawaiian royalty. When brushes are set aside, Kona invites exploration of coffee plantations, snorkeling in crystal-clear bays, and authentic cultural experiences. This island destination promises a transformative artistic journey capturing the true essence of Hawaii's magnificent coastal splendor.



### What's included?

- \* Welcome Reception
- \* Seven nights of lodging
  - \* Daily breakfast
- \* Four days of Plein Air Workshop instruction
  - \* Two group dinners

### About Eric Wiegardt

Eric Wiegardt, pictured with his wife Ann, was awarded the Gold Medal and Dolphin Fellow from the American Watercolor Society in New York, the highest honor for watercolor painting. As both a teacher and artist, he has left an indelible mark on the art scene with his bold, loose painting style. He has taught more than 5,000 watercolorists and sold over 4,000 original paintings.



## LODGING IN KONA

### Courtyard King Kamehameha's Kona Beach Hotel

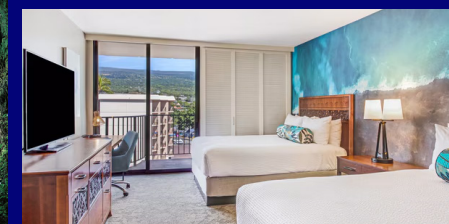
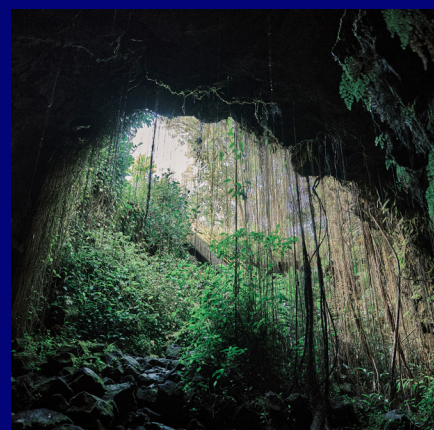
Located on the historic grounds where King Kamehameha once resided, this oceanfront hotel combines Hawaiian cultural heritage with modern comfort. All workshop participants will enjoy partial ocean views from their rooms, while the property offers amenities including a private beach area, swimming pool overlooking Kailua Bay, on-site dining options, and cultural displays celebrating Hawaiian history. Perfectly situated in the heart of Kona, guests can easily access water activities, historic sites, and the vibrant atmosphere of Alii Drive.



### Available Room Packages: Prices are Per Person

\*See additional details on our website\*

Single Painter	\$5,770
Shared Painter	\$4,230
Shared Companion	\$3,580



FOR MORE INFORMATION, VISIT US AT [ERICWIEGARDT.COM](http://ERICWIEGARDT.COM) OR CALL THE GALLERY AT 360.665.5976